

## Migration, Climate, Livelihoods: Lessons from research in Mexico and South Africa



Dr. Lori M. Hunter  
Professor of Sociology  
Director, CU Population Center  
Institute of Behavioral Science  
University of Colorado Boulder, USA

Collaborators: Stefan Leyk, Raphael Nawrotzki, Fernando Riosmena, Dan Runfola, Dan Simon, Wayne Twine

Prepared for Santa Fe Institute, October 2018



## Talk Outline

- Foundations
- Mexico: theory, data, methods
- South Africa: theory, data, methods
- What's needed next ?

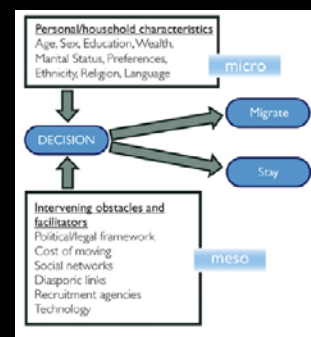


## Talk Outline

- Foundations
- Mexico: theory, data, methods
- South Africa: theory, data, methods
- What's needed next ?



Migration as a  
core  
demographic  
process, what do  
we know?



Black et al. 2011

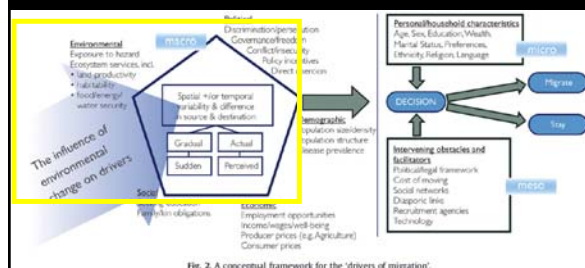
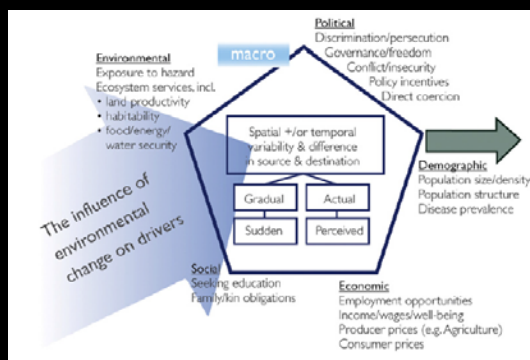


Fig. 2. A conceptual framework for the 'drivers of migration'.

Findings from Migration-Climate Research ....

- Environmental pressures come in myriad forms

- Environmental “push” factors intertwine with economic and other factors shaping vulnerability

- East Africa: Bunce, Rosendo, Brown 2010
- Nicaragua: Radel et al. 2017

- In rural households, migration is but one component of a variety of adaptive livelihood strategies

- Ethiopia: Meze-Hausken 2000
- Vietnam: Adger et al 2002
- Canada: McLeman 2014
- Brazil: Vanwey et al. 2007
- China: Qin 2010
- Nicaragua: Radel et al. 2017



**cupc**  
CU Population Center



- In some regions, drier areas and those with recent rainfall deficits, exhibit higher levels of outmigration

- Ethiopia: Henry et al. 2005
- Mexico: Nawrotzki et al. 2012, Hunter et al. 2012

**cupc**  
CU Population Center

- Much environmentally-induced migration is internal

- Ecuador: Clark and Bilsborrow 2013
- Guatemala: Lopez-Carr 2012
- Nepal: Massey et al. 2010
- China: Qin 2010
- Cambodia: Nuorteva et al. 2010



**cupc**  
CU Population Center

- In fact, international migration is sometimes associated with GREATER “natural capital”

- Ecuador: Gray 2010, Gray and Bilsborrow 2013



**cupc**  
CU Population Center

## Talk Outline

### • Foundations

- Mexico: theory, data, methods
- South Africa: theory, data, methods
- What's needed next ?



**cupc**  
CU Population Center

## Talk Outline

### • Foundations

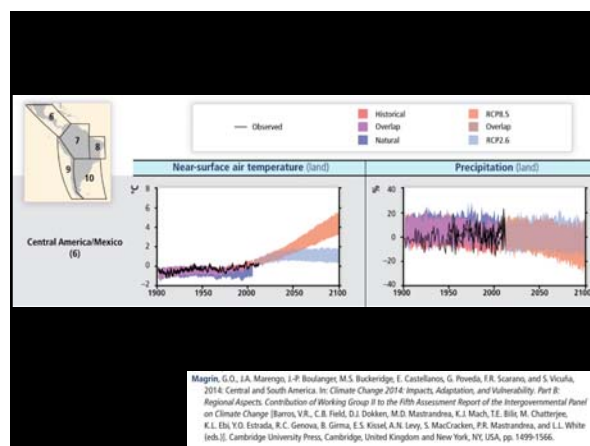
- Mexico: theory, data, methods
- South Africa: theory, data, methods
- What's needed next ?



**cupc**  
CU Population Center

## Why study environmental aspects of Mexican migration?

- As of 2013, substantial work on social, economic, political drivers
  - little on environmental
- Natural disasters, crop yields



## Environmental conditions important



- Agriculture key to rural Mexican livelihoods
- Majority rain-fed
- Theory: New Economics of Labor Migration

cupc

CU Population Center

## Data

- Typical secondary sources for Mexico-US migration research
  - Mexican Migration Project
  - Mexican Census Public Use Microdata Sample, 2000 and 2010
  - IPUMS Terra

cupc

CU Population Center



## Methods



- Geocoding at municipal scale
- Rainfall data: Climate Research Unit, WorldClim
- Measurement:
  - Recent temp/rainfall compared to 30-year normal
  - Warm/cold spells, duration, intensity
- Multi-level data

## Methods



### • Survival analysis:

- Probability of adult HH member emigrating to US
- With socioeconomic controls + recent climate conditions

	Undocumented		Documented	
	b	sig.	b	sig.
<b>Household level (head)</b>				
Female	0.53	***	0.68	
Married	0.96		1.36	
No. of children	0.96	**	0.99	
Education <sup>§</sup>	0.74	**	3.29	***
Working experience <sup>§</sup>	0.71	***	1.00	
Occupation: not in labor force	0.91		1.43	
Occupation: white collar	0.56	***	0.63	
Owns property	0.83	*	1.14	
Owns business	0.77	*	1.03	
<b>Community/municipality level</b>				
Network density <sup>§</sup>	1.56	***	1.49	**
Wealth index	0.81		0.74	
Corn (area harvested)	0.94		0.68	*
Farmhand (irrigated) <sup>§</sup>	1.04		0.93	
Base period precip (1961-90)	1.11		0.73	
Base period temp (1961-90)	0.91	**	0.98	
Male labor in agriculture <sup>§</sup>	1.01		0.88	
<b>§ Climate change</b>				
Warm spell duration	1.19	***	1.16	
Precip extremely wet days	0.82	***	0.98	

	Undocumented		Documented	
	b	sig.	b	sig.
<b>Climate change</b>				
Warm spell duration	1.19	***	1.16	
Precip extremely wet days	0.82	***	0.98	

## Overall findings



Most influence of environmental conditions on migration:

- Dry areas
- Rural (vs. urban), agriculturally-dependent
- International (vs. internal)
- Strong social networks
- Undocumented (vs. documented)
- With intersecting rain/temp extremes

## Talk Outline

- Foundations
- **Mexico: theory, data, methods**
- South Africa: theory, data, methods
- What's needed next ?



## Talk Outline

- Foundations
- Mexico: theory, data, methods
- **South Africa: theory, data, methods**
- What's needed next ?





## Environmental Context

Resource	Mean % of households
Wild spinaches	95.6 ± 1.3
Fuelwood	95.5 ± 1.9
Wooden utensils	95.1 ± 1.9
Grass hand-brushes	90.7 ± 4.6
Wild fruits	88.2 ± 4.0
Twig hand-brushes	87.1 ± 5.1
Wood for fences or kraals	82.0 ± 5.5
Weaving materials (reeds, grass, palm leaves)	55.4 ± 9.6
Edible insects	53.5 ± 9.5
Bushmeat	51.6 ± 8.4
Wild honey	50.5 ± 10.6
Medicinal plants	49.4 ± 7.5
Wood for housing poles	49.0 ± 8.1
Thatch grass	48.8 ± 9.0



## Natural resource context important

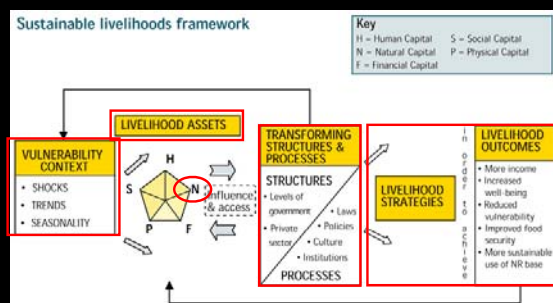


- Theory: Sustainable Livelihoods Framework

cupc

CU Population Center

## Sustainable livelihoods framework



## Data



• Wits School of Public Health, Health and Population Division

- 21 villages
- 11,000 HHs
- Baseline: 1992



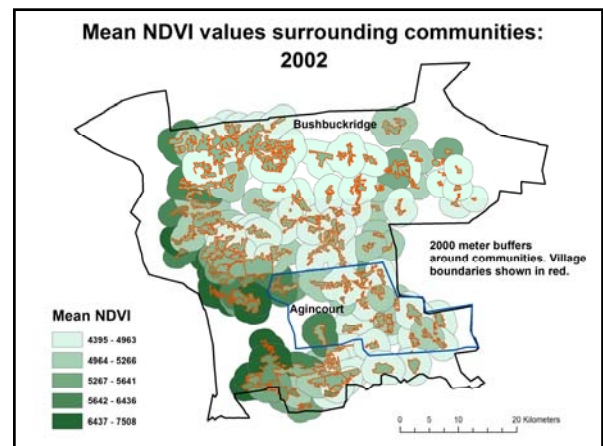
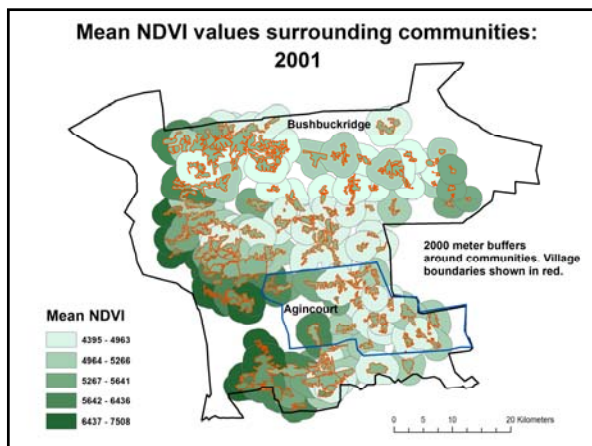
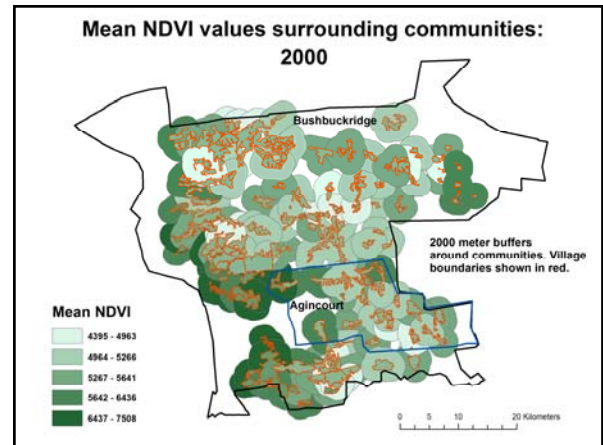
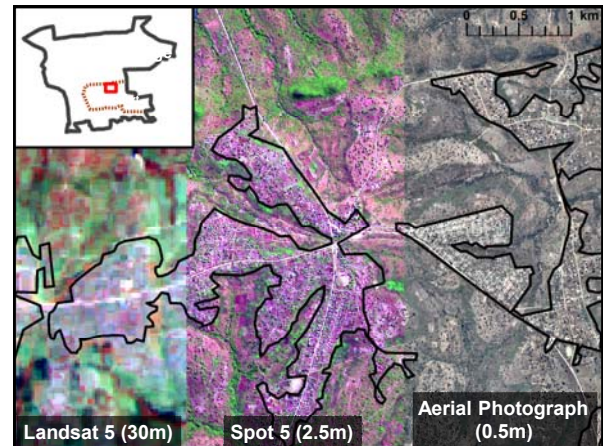
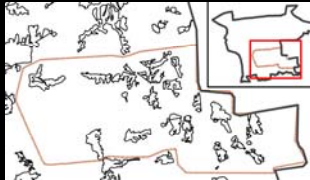
**INDEPTH Network**  
Better Health Information for Better Health Policy

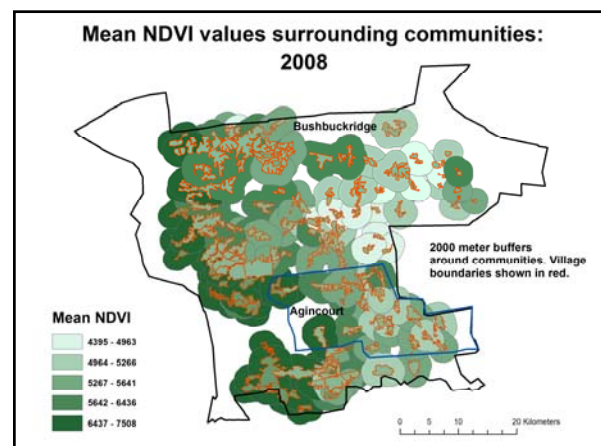
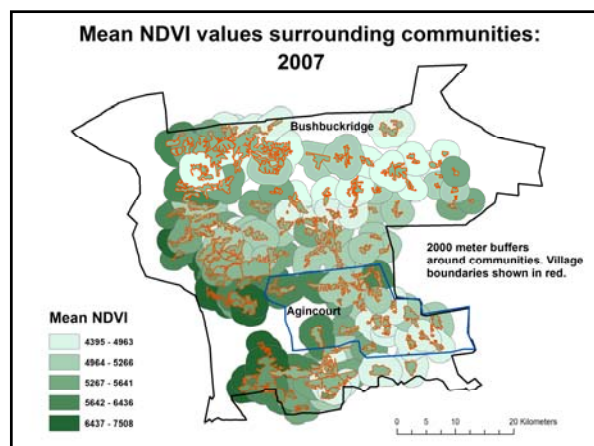
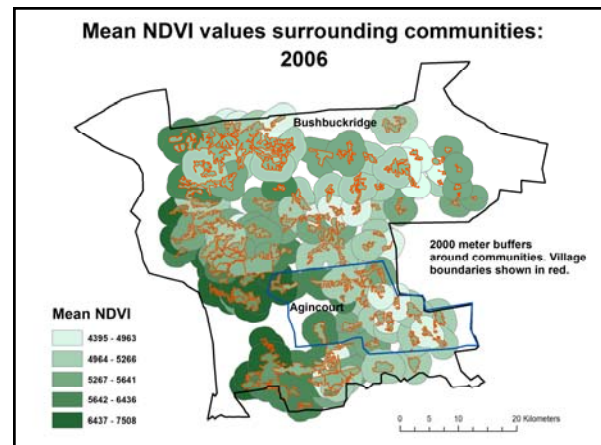
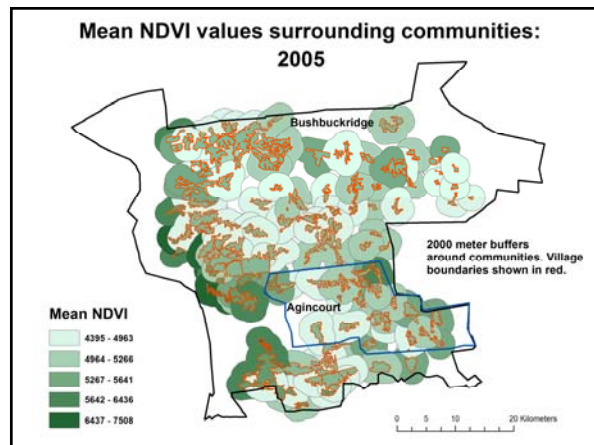
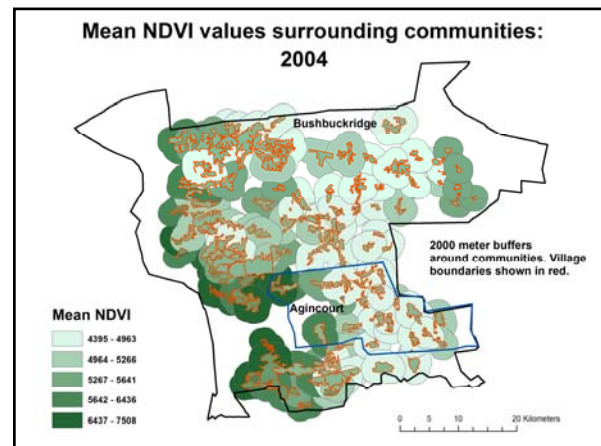
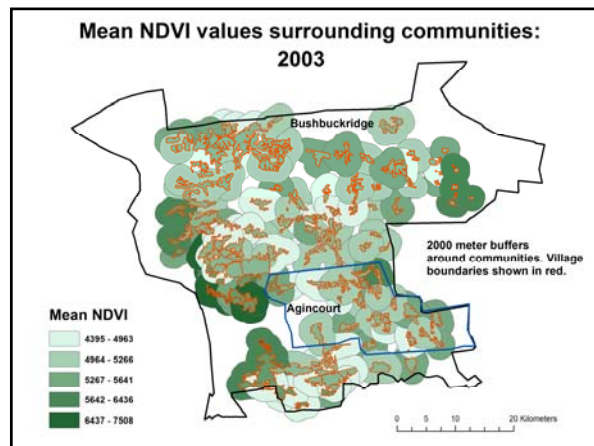


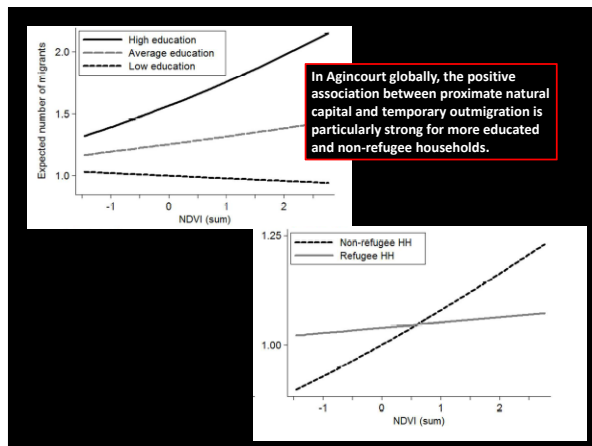


## Data

- Natural resource context important
- Remotely sensed imagery
  - NDVI







## Talk Outline

- Foundations
- Mexico: theory, data, methods
- **South Africa: theory, data, methods**
- What's needed next ?



cupc  
CU Population Center

## Talk Outline

- Foundations
- Mexico: theory, data, methods
- South Africa: theory, data, methods
- **What's needed next ?**

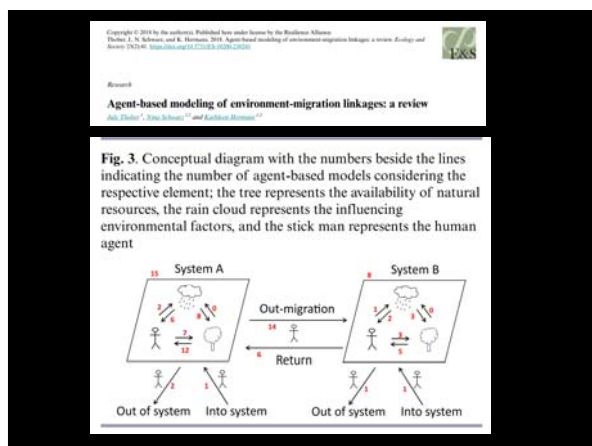


cupc  
CU Population Center

- Expanded theoretical guidance
  - Migration theory
- Expanded modeling
  - Complex systems models (!)
    - ABMs



cupc  
CU Population Center



## Talk Outline

- Foundations
- Mexico: theory, data, methods
- South Africa: theory, data, methods
- **What's needed next ?**



cupc  
CU Population Center



## Talk Outline

---

- Foundations
- Mexico: theory, data, methods
- South Africa: theory, data, methods
- What's needed next ?

